



OFFERS OVER

£165,000

Townhead Street
Strathaven, ML10 6TF

PROPERTY SUMMARY

Steeped in local history, this attractive blonde sandstone semi-detached property has served as a schoolhouse, private residence, and a place of worship throughout the years. With a substantial layout, pretty village setting the building has excellent potential to be converted into a wonderful family home.

Planning permission granted and building warrant issued. The thoughtfully designed plans allow for a well-proportioned, four bedroom, bungalow. The building does however offer further potential to develop the upper floor with the necessary planning.

0



0



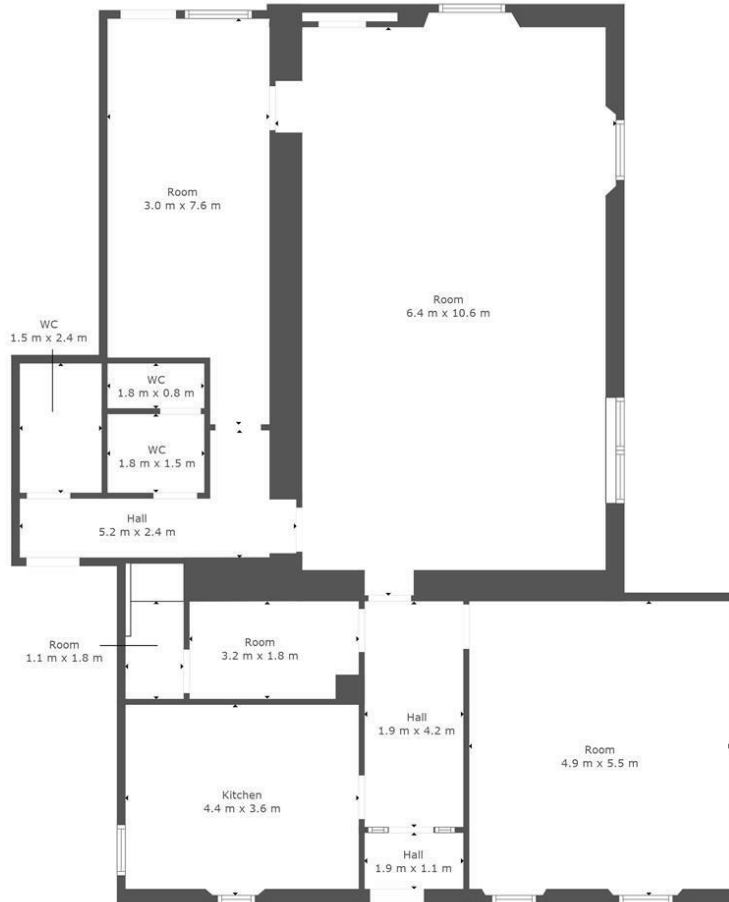
0











This Floorplan Is Intended To Give An Indication Of The Layout Only.

LOCAL AUTHORITY

South Lanarkshire

TENURE

Freehold

COUNCIL TAX BAND

Exempt

VIEWINGS

By prior appointment only

Agents Note: Whilst every care has been taken to prepare these particulars, they are for guidance purposes only. All measurements are approximate and are for general guidance purposes only and whilst every care has been taken to ensure their accuracy, they should not be relied upon and potential buyers/tenants are advised to recheck the measurements



OFFICE ADDRESS

9 Townhead Street
Strathaven
ML10 6AB

OFFICE DETAILS

01357 510088
judithmcgill@cruive-
estateagents.co.uk